



350 S. St. Charles St. Jasper, In. 47546

Ph. 812.482.2932 Fax 812.634.6632

[www.ridetech.com](http://www.ridetech.com)

## Part # 11331010

### 63-87 Chevy C10 Front CoolRide Kit

For Use w/ Stock Lower Arms

#### COOLRIDE KIT

##### Components:

|   |          |                               |
|---|----------|-------------------------------|
| 2 | 90006873 | Front air springs – 224C      |
| 2 | 90000060 | Upper air spring plate        |
| 2 | 90000057 | Lower air spring cup bracket  |
| 2 | 90001083 | Medium bump stops – 1.5" tall |
| 1 | 90000293 | Driver side steering stop     |
| 1 | 90000294 | Passenger side steering stop  |

##### Hardware Kit:

|    |          |                        |                                 |
|----|----------|------------------------|---------------------------------|
| 16 | 99372002 | 3/8" USS Nylok nut     | Air spring mounts               |
| 2  | 99371001 | 3/8" x 3/4" USS bolt   | Air spring to lower cup bracket |
| 2  | 99373005 | 3/8" lock washer       | Air spring to lower cup bracket |
| 4  | 99371003 | 3/8" x 1" USS bolt     | Steering stop to lower arm      |
| 8  | 99371004 | 3/8" x 1 1/4" USS bolt | Upper mount to frame            |
| 30 | 99373003 | 3/8" SAE flat washer   |                                 |

#### SHOCK KIT

##### Shock:

|   |          |                                |
|---|----------|--------------------------------|
| 2 | 22939999 | HQ Smooth Body Shock Cartridge |
| 4 | 70011138 | 3/4" ID Shock Bushing          |
| 2 | 90002102 | 1/2" ID Inner Sleeve           |
| 2 | 90002103 | 5/8" ID Inner Sleeve           |

##### Components:

|   |          |            |
|---|----------|------------|
| 2 | 90001617 | Shock Stud |
|---|----------|------------|

##### Hardware:

|   |          |                                |
|---|----------|--------------------------------|
| 2 | 99501003 | 1/2"-13 x 2 1/2" Hex Head Bolt |
| 2 | 99502001 | 1/2"-13 Nylok Nut              |

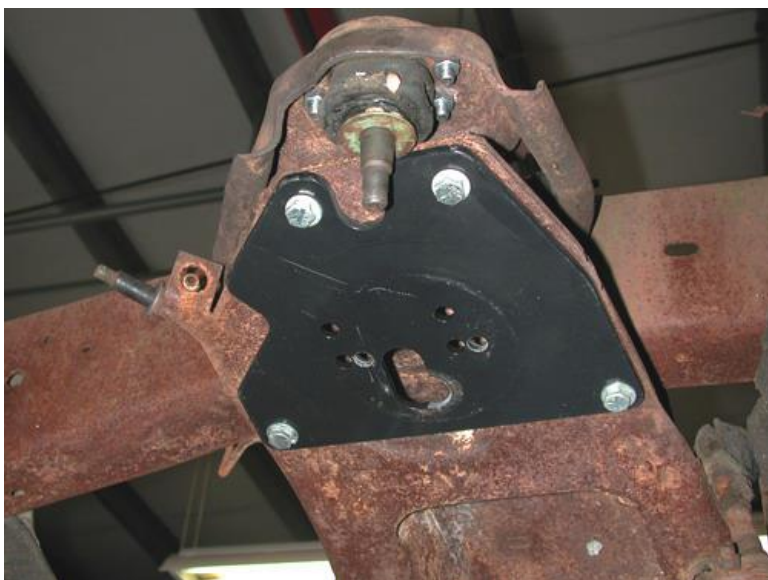
# COOLRiDE<sup>®</sup>

by Air Ride Technologies

## CoolRide Installation Instructions

\*\*\*\*\*Must be used w/ Ridetech shock kit\*\*\*\*\*

1. Raise and support truck at a safe, comfortable working height. Let the front suspension hang freely.
2. Remove coil spring, shock absorber and bump stop. Refer to factory service manual for proper disassembly procedure.



3. Hold the upper plate to the cross member as shown in the picture to the left and clamp to frame. Using the plate as a template drill 4 holes in the cross member.

4. Apply thread sealant to the air fitting and thread into the air spring. Remove the upper plate from the frame and place onto the studs on the top of the air spring. The holes are lettered; slide the plate to position B moving the air spring to the rear of the vehicle. Secure with flat washers and nyloc nuts. Route airline.



5. Bolt the lower bracket to the air spring using a 3/8" x 3/4" bolt, lock washer and flat washer.

6. Attach the air spring assembly to the frame using 3/8" x 1 1/4" bolts, Nylok nuts and flat washers supplied. The lower mount will simply sit in the coil spring pocket. It does not need to be attached.

7. Replace the factory shock, with the new ones supplied.

8. Bolt the steering stop to the lower arm. Check air spring clearance with the caliper at full lock. The air spring should be about 5" tall at ride height.

**DO NOT ALLOW THE AIR SPRING TO RUB. THIS WILL DAMAGE THE AIR SPRING AND IS NOT A WARRANTABLE SITUATION.**



350 S. St. Charles St. Jasper, In. 47546

Ph. 812.482.2932 Fax 812.634.6632

[www.ridetech.com](http://www.ridetech.com)

## Shock Installation Instructions



1. Replace the factory upper shock stud with the new one supplied.
2. Fasten the shock to the upper stud.
3. Fasten the shock to the lower arm using the factory hardware.