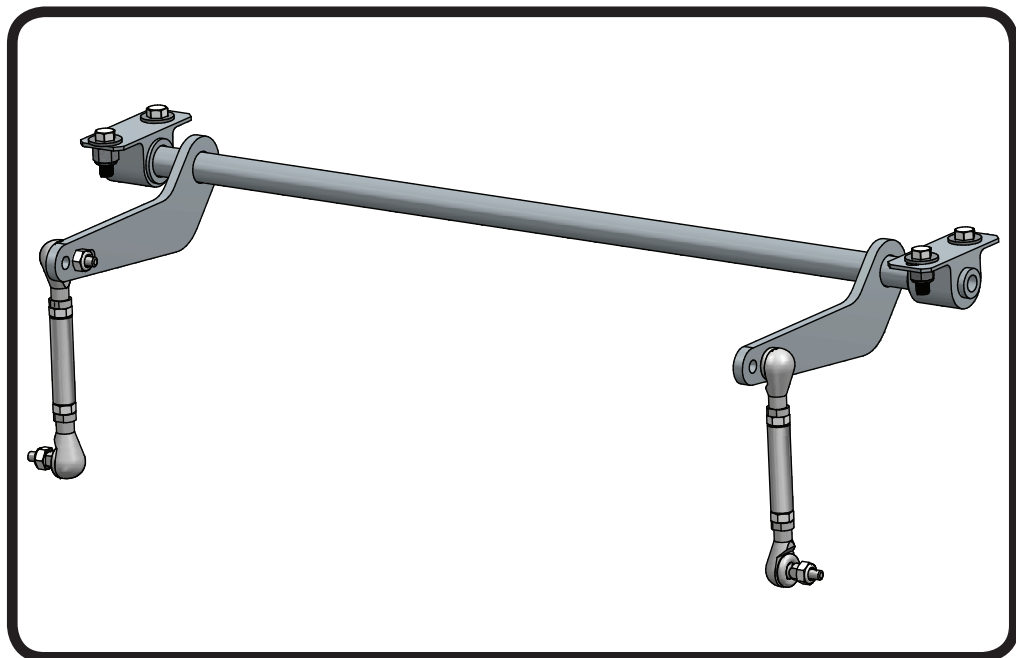
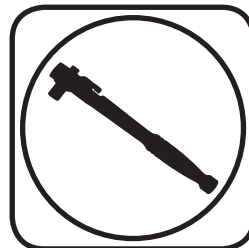
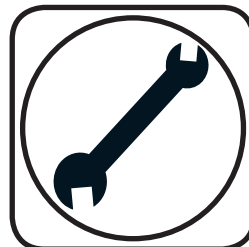




### Part # 11339102 - 1963-1972 C10 Rear MuscleBar



#### Recommended Tools



## 1963-1972 C-10 Rear MuscleBar Installation Instructions

#### Table of contents

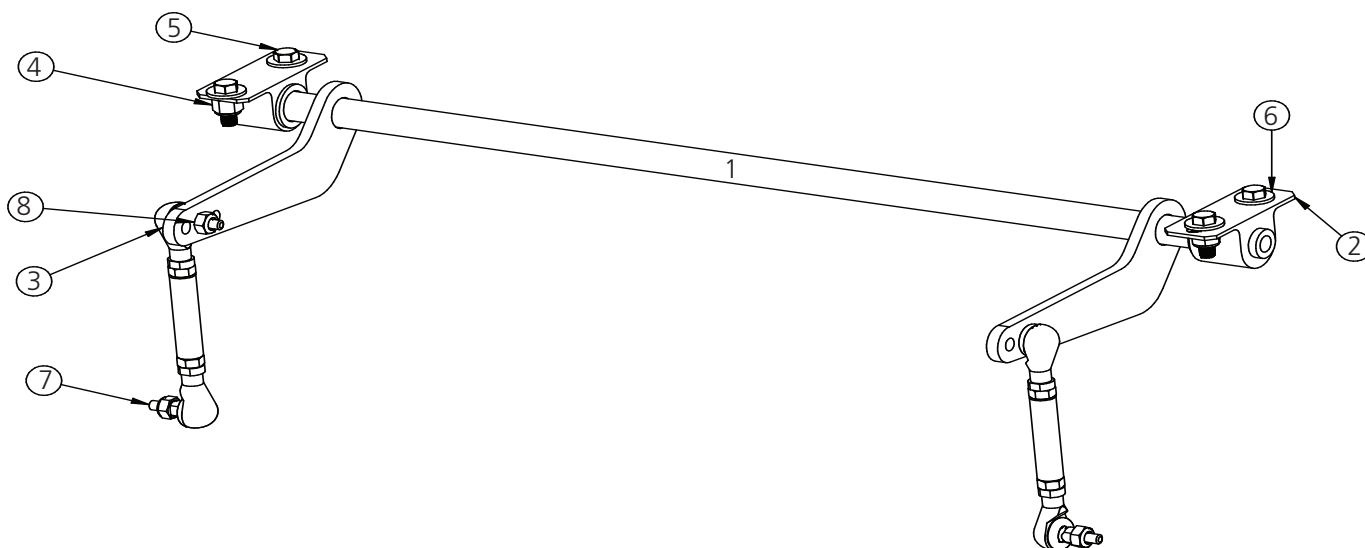
Page 2.....	Included components and Hardware List
Page 3.....	Getting Started
Page 4.....	MuscleBar Installation
Page 5.....	Final Tightening and Adjusting





### Major Components .....In the box

Item #	Part #	Description	QTY
1	90002433	C-10 Rear MuscleBar Assembly	1
2	99800004	Poly Bushing and Frame Bracket	2
3	90000926	10mm 90 degree elbow (Preassembled Posilink)	4
	90000114	Posilink Spacer (Preassembled Posilink)	2
	99115003	M10-1.5 115mm stud (Preassembled Posilink)	2
	99112001	M10-1.5 Jam Nut (Preassembled Posilink)	4
	90001092	Tube of Lithium Grease (Not Shown)	1



### Hardware List .....In the box

Item #	QTY	Part Number	Description	Location
4	4	99432001	7/16" Nylok Nut	Swaybar bushing to Frame
5	4	99431002	7/16"x 1 1/4" Hex Bolt	Swaybar bushing to Frame
6	8	99433002	7/16" SAE Flatwasher	Swaybar bushing to Frame
7	4	99112002	M10-1.5 Nylok Nut	Posilink to Swabar and StrongArm
8	8	99373003	3/8" SAE Flatwasher	Posilink to Swabar and StrongArm



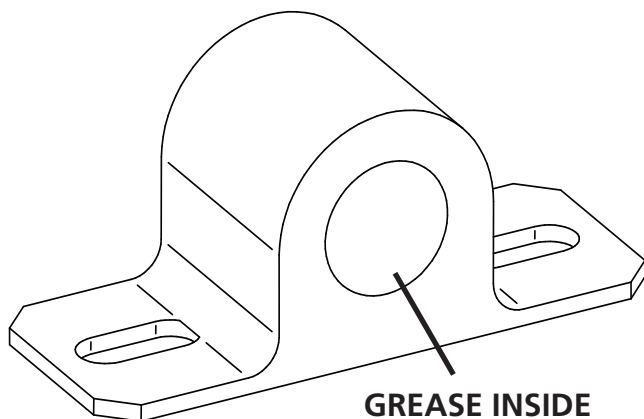
### Getting Started.....

Congratulations on your purchase of the Ridetech Rear Strongarm System. This system has been designed to give your truck excellent handling along with a lifetime of enjoyment. Some of the key features of this MuscleBar: Posilinks - The Posilink makes the reaction of the swaybar instantaneous, tuneability - this Musclebar has 3 positions to aid in the tuning of the handling of your truck,

**Note:** This MuscleBar is designed to be used with the Ridetech Shockwave/Coliover System.

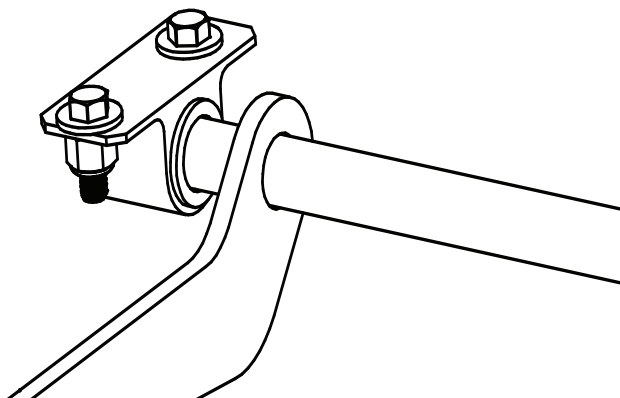
**Note:** It is necessary to remove the bed to install this MuscleBar. The best time to install the swaybar, is while installing the rear StrongArm system.

1.



1. Apply Lithium grease to the inside of the sway bar bushings using the tube of grease supplied in the kit.

2.



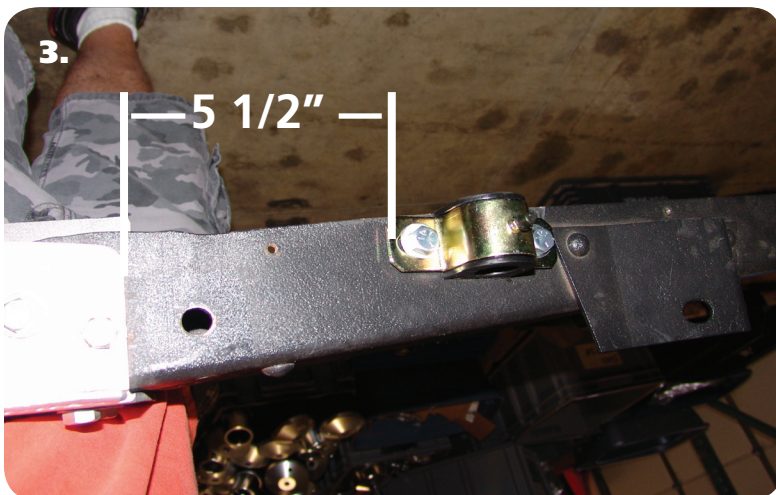
2. Install the swaybar bushings and straps onto the MuscleBar. The bushings and straps get installed on the outer ends of the Muscle-Bar against the stop rings.



### MuscleBar Installation



**Note:** This picture illustrates where the MuscleBar is positioned on the frame for drilling the holes. The Swaybar is located in front of the "C"-Notches against the bed support. The arms on the MuscleBar drop down and point to the rear of the truck. On 67-72 Trucks the bed support will aid you in positioning the mounts. On 63-66 the rear tab of the swab bar mount is 5 1/2" from the front of the "C"-Notch (Diagram #3).



**3.** On 67-72 Trucks position the Musclebar so that the strap touches the rear corner of the bed support on the frame. Center it side to side. You can double check yourself by measuring from the rear of the mount to the front of the "C"-Notch 5 1/2" (Figure #3). Drill 7/16" holes using the straps as a template. With the holes drilled position the swaybar on the **BOTTOM** side of the frame. Attach the bushing straps to the frame using (4) 7/16 x 1 1/4" bolts, (4) 7/16" Nylok nuts, and (8) 7/16" SAE Flatwashers. Install a flatwasher under the bolt head, and one under the Nylok nut. Do not tighten these bolts until the Posilinks are hooked up in the next step.



**4.** Attach the Posilinks in the **CENTER** hole of the MuscleBar and the StrongArm using a 3/8" SAE Flatwasher on each side of the arm on the MuscleBar and each side of the bracket on the StrongArm. Install 10mm Nylock nut on each posilink and tighten down.



## **Final Tightening and Adjusting**

**5.** Tighten the bolts attaching the bushings bracket to the frame. After installation, be sure that the Musclebar will go through the entire suspension travel without contacting anything

The MuscleBar has 3 positions to aid in the tuning of your trucks handling. We start in the center position and tune from there. The Position to the front of the truck will make the Musclebar stiffer. The position to the rear of the truck will make the MuscleBar softer.

**Note:** If any grease is needed after installation use a lithium based grease. **DO NOT USE A PETROLEUM BASED GREASE**

**STILL HAVE QUESTIONS?**

**Tech line hours**

Monday - Friday

8AM - 6PM (EST) ..... 812-482-2932

**[www.ridetech.com](http://www.ridetech.com)  
812-482-2932**